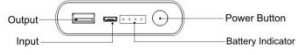


Specification

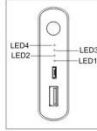
Cell Capacity : 3.7V/10400mAh
 Output Voltage : DC 5.1V
 Input Voltage : DC 5.0V
 Output Current: 2.0A
 Input Current: 2.0A
 Size: 3.66" x 3.05" x 0.87" inch
 Weight: 8.82 OZ
 Operating Temperature: 0°C - 45°C
 The battery will be fully charged in 8 hours(5V/2A adapter required)



Package Includes:

1. P100 External Battery
2. Manual
3. Micro USB Cable
4. Warranty Card

Charging



The LED indicator will show the battery level of the P100 as seen below:

Button (Y/N)	Capacity	LED1	LED2	LED3	LED4
Charging	0-25%	ON	ON	ON	ON
	25-50%	ON	ON	ON	Flashing
	50-75%	ON	ON	OFF	OFF
	75-99%	ON	ON	ON	ON
	Full Charged	ON	ON	ON	ON

Discharging

The LED indicator will show the battery level of the P100 as seen below:

Button (Y/N)	Capacity	LED1	LED2	LED3	LED4
Discharging	75-99%	ON	ON	ON	ON
	50-75%	ON	ON	ON	OFF
	25-50%	ON	ON	OFF	OFF
	1%-25%	ON	OFF	OFF	OFF
	0%	OFF	OFF	OFF	OFF

Safety and Maintenance

- ◆ Do not expose to open flame or extreme temperatures
- ◆ Do not attempt to short-circuit



- ◆ Do not drop in water or use in high humidity



- ◆ Stop using if you see any liquid leaking, overheating and other unexpected conditions



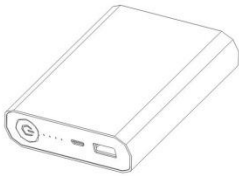
- ◆ The recommended operating temperature is between 10°C-45°C



- ◆ Please Recycle



SCUD

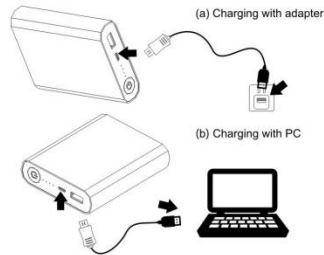


P100 Instructions

SCUD USA INC.
 WWW.SCUDGROUPUS.COM
 Email: market@scudgroupus.com

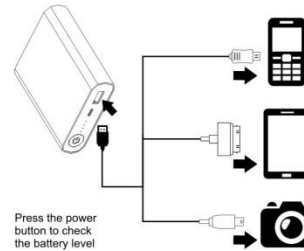
How to Charge P100

1. Attach the micro USB cable to the P100's micro USB input port.
2. Insert the other end of the cable into either (a) an AC adapter (not included) connected to a wall socket or (b) an active computer USB port.
3. The LED indicator will light up when it is charging. Each flashing LED shows the current level of power in the battery (as shown in the charging chart). The LED display will shut off automatically when charging is completed.



How to Charge Devices with P100

1. Plug the USB cable into the P100's USB output port.
2. If your device has a micro USB connection, insert it directly into your device. For other connections, select the proper connector attachment, then insert into your device.
3. The P100 will start charging once both cable ends are connected.
4. The P100 will shut off automatically once your device has completed charging.



Press the power button to check the battery level